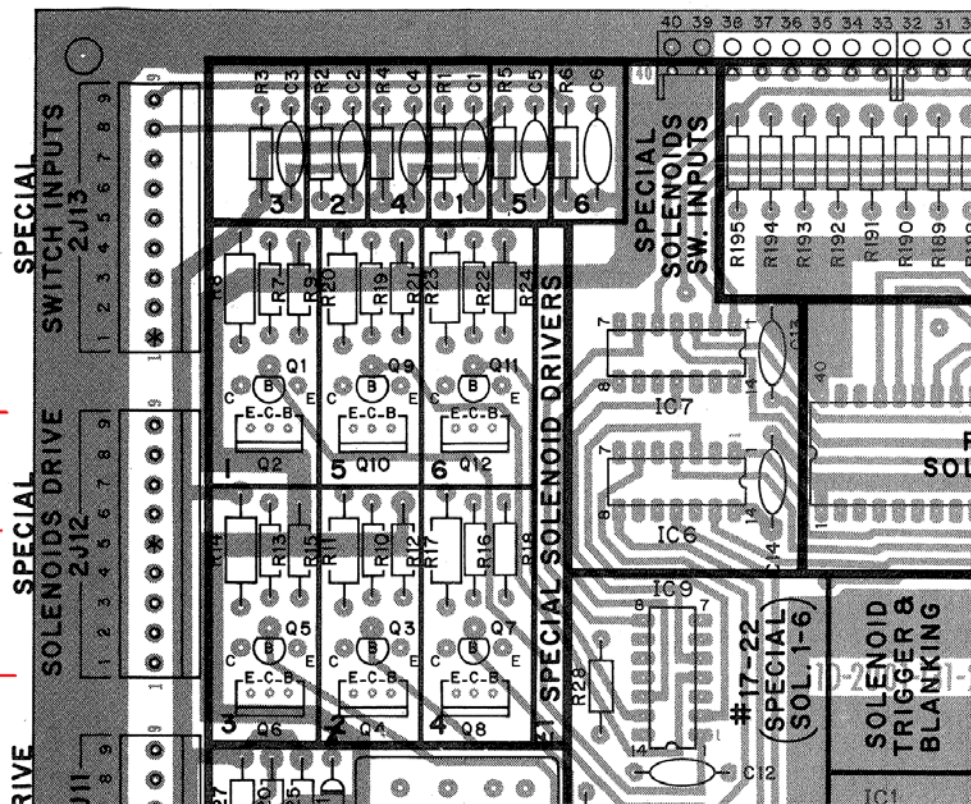


# Special Solenoid Saver Installation Instruction - Version 0.1

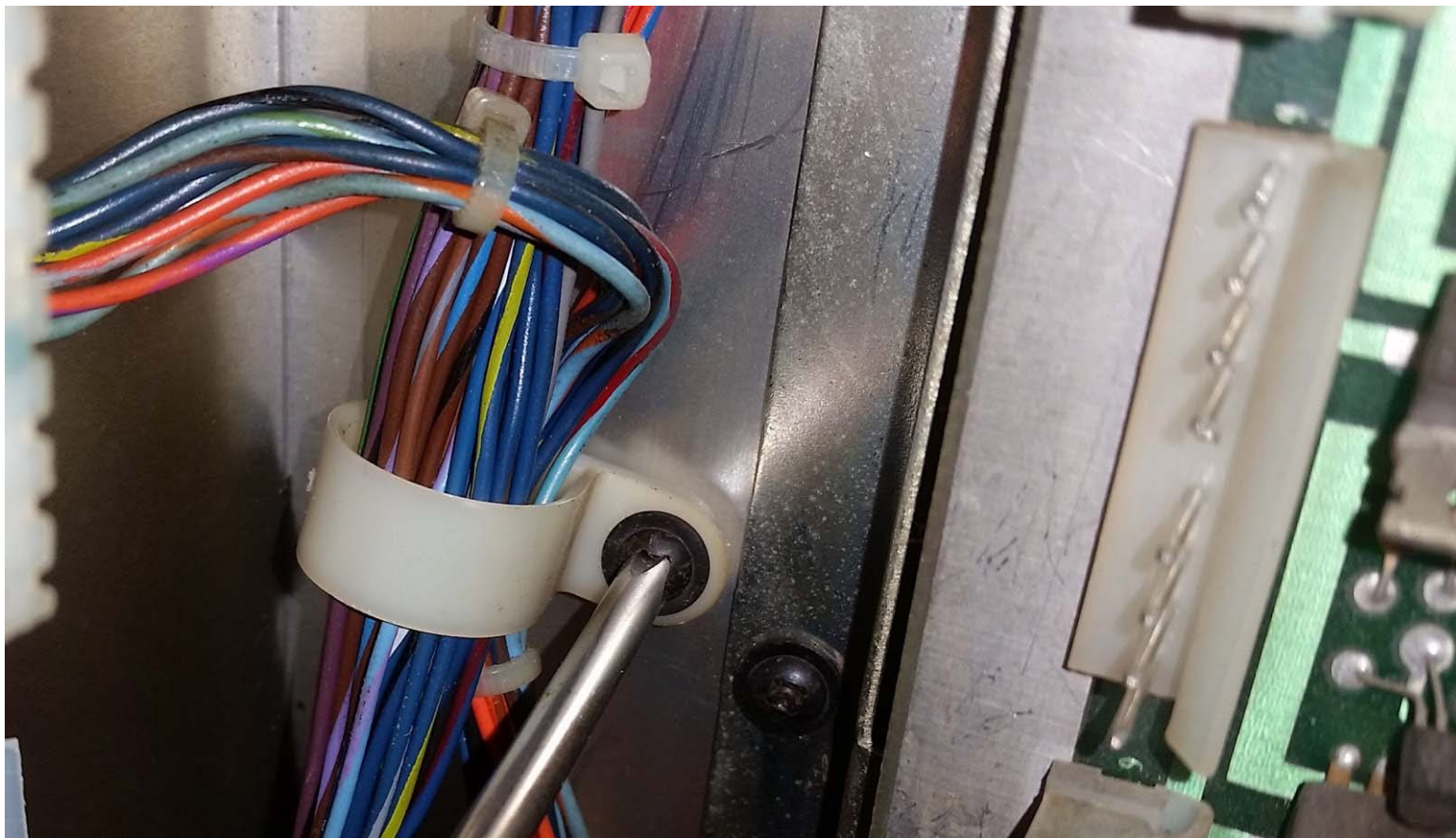
Find 2J12 on the driver board. This is where the SSS board will plug in at.

R. GAY 11-28-77  
28, PT. NO. WAS  
& ADDED MOUNT-  
ING FOR R149 THRU  
R. GAY 4-11-78  
ITEM NO. 36,  
L-8985.  
R. GAY 9-12-78  
EM NO. 36 &  
22, DELETED (8)  
RS & QTY. WAS 32  
24 R. GAY 10-4-78

\*\*\*  
Connector  
2J12  
\*\*\*

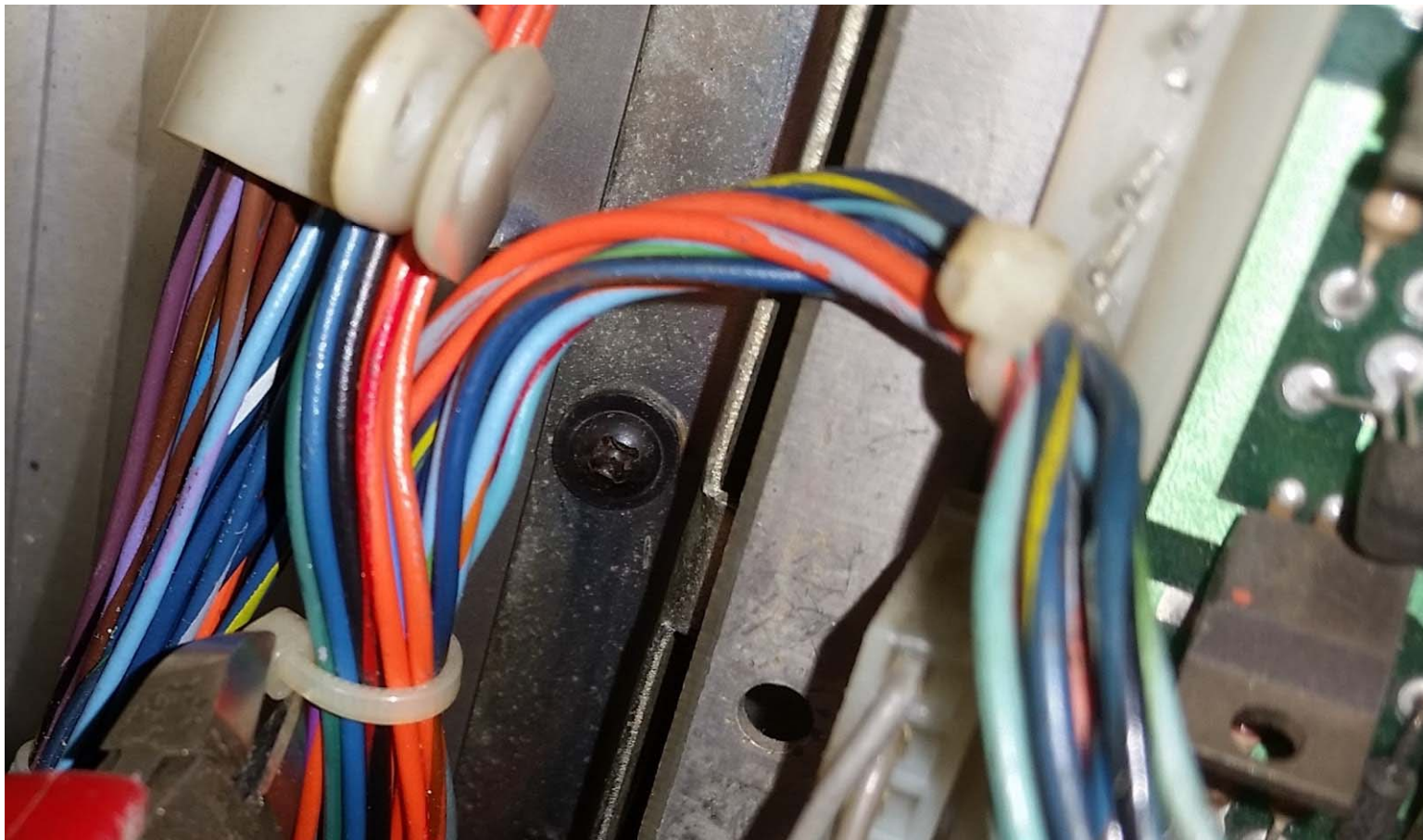


You will need to add some slack to the 2J12 connector. Unscrew wire bundle tie down that is closest to 2J12.





Start to separate 2J12 connector from the unscrewed bundle tie down. Then remove a zip tie for more slack in 2J12.



Use the board as a template to mark the mounting points where you plan on installing the board. Use the left wall of the head nearby 2J12.

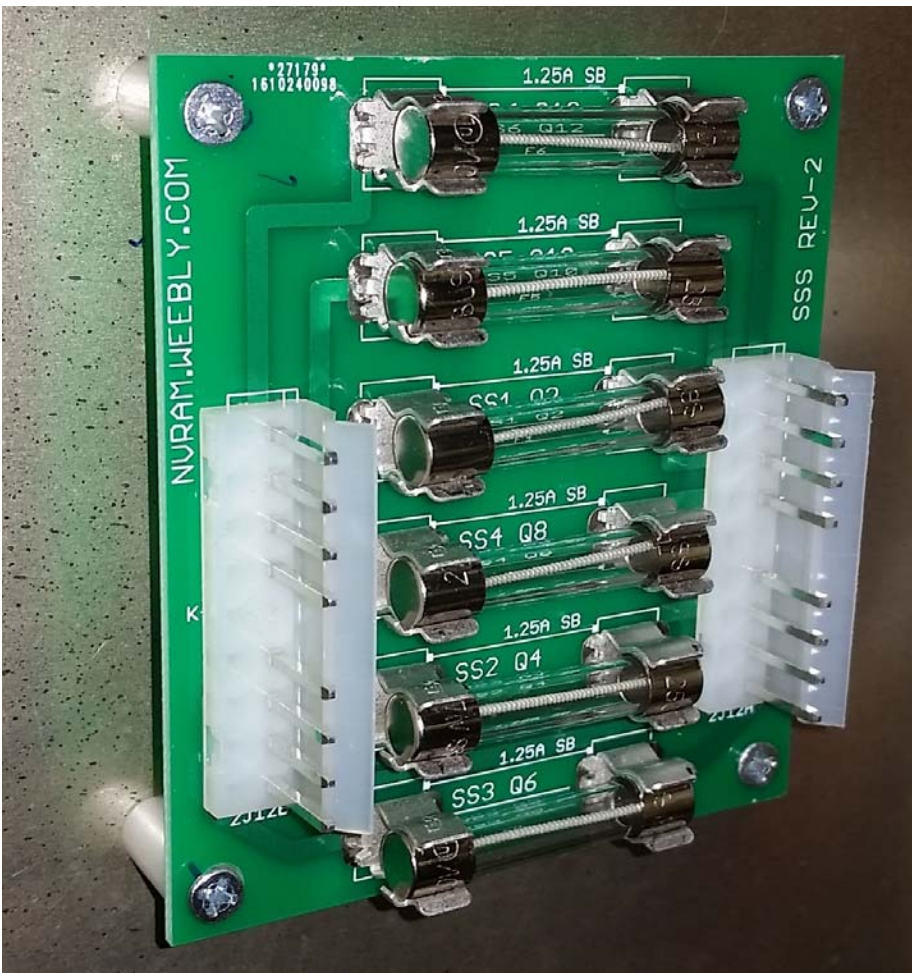




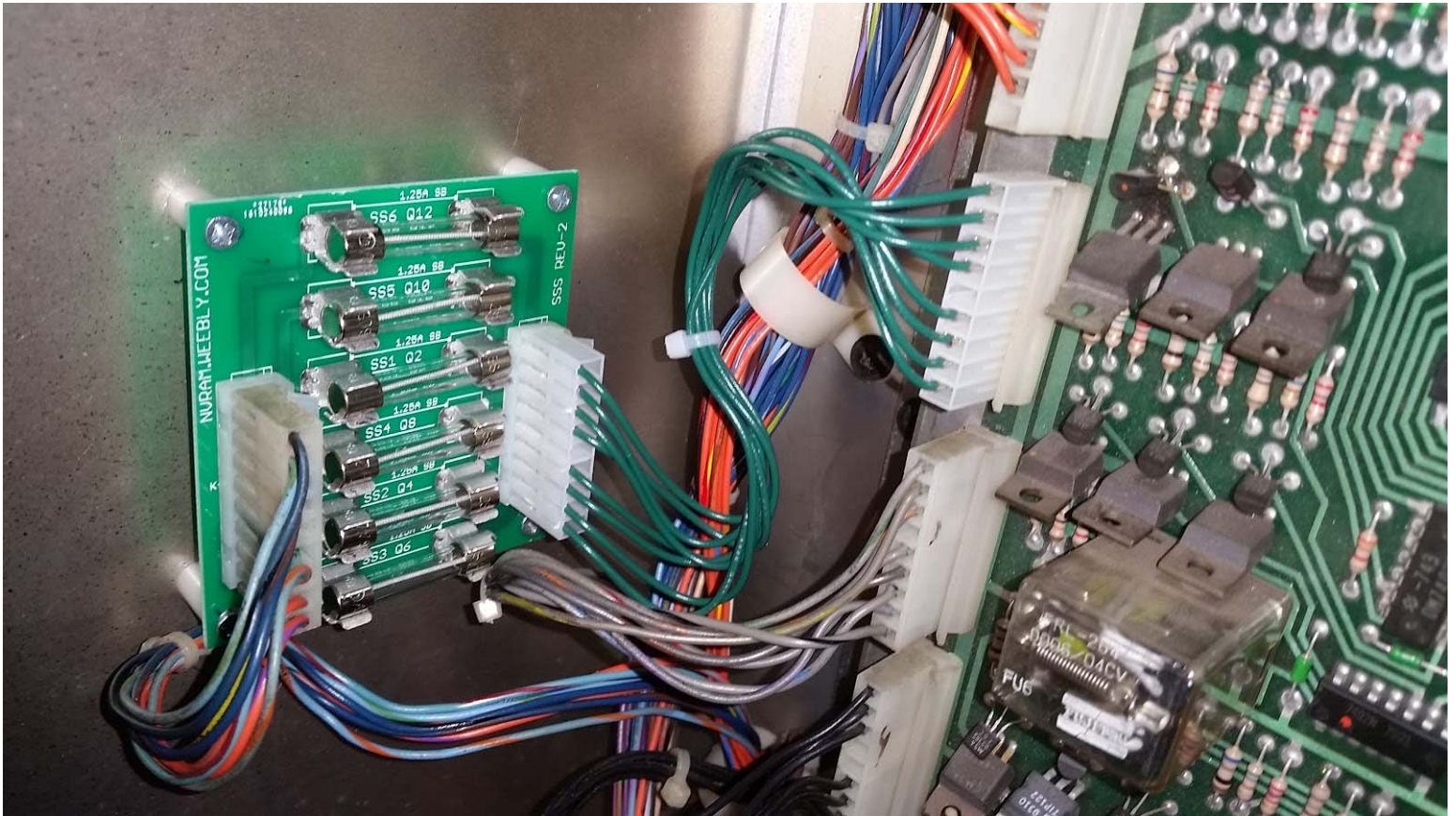
The screws included are wood screws, so you must puncture through the meta side wall sheet. You can use a drill. You will feel when the drill passes the metal into wood. Just break the surface of the wood. Be careful that you do not run the drill all the way through the head wall.



Mount the board with the nylon column stand offs and wood screws.



Install the connectors. Reinstall the wire bundle tie down.



That is it!